

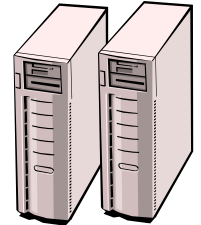
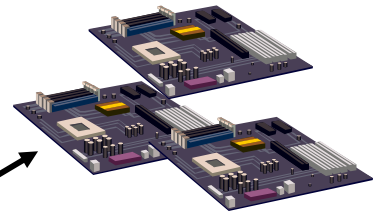
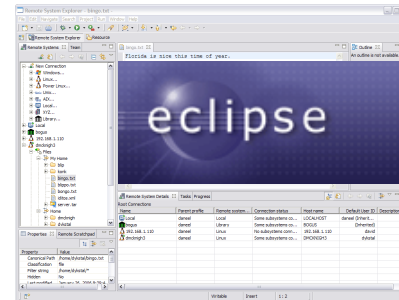
So what is Target Management all about?

Remote Computer Systems...

- Targets (Locally connected, shared, fielded)
- Hosts (Grids, farms, nodes)

... and developing software on them

- Build, connect, get status
- Download, run, debug, test
- Upload



An Eclipse Project under DSDP since June 2005.
Release 1.0 planned for October 22, 2006.

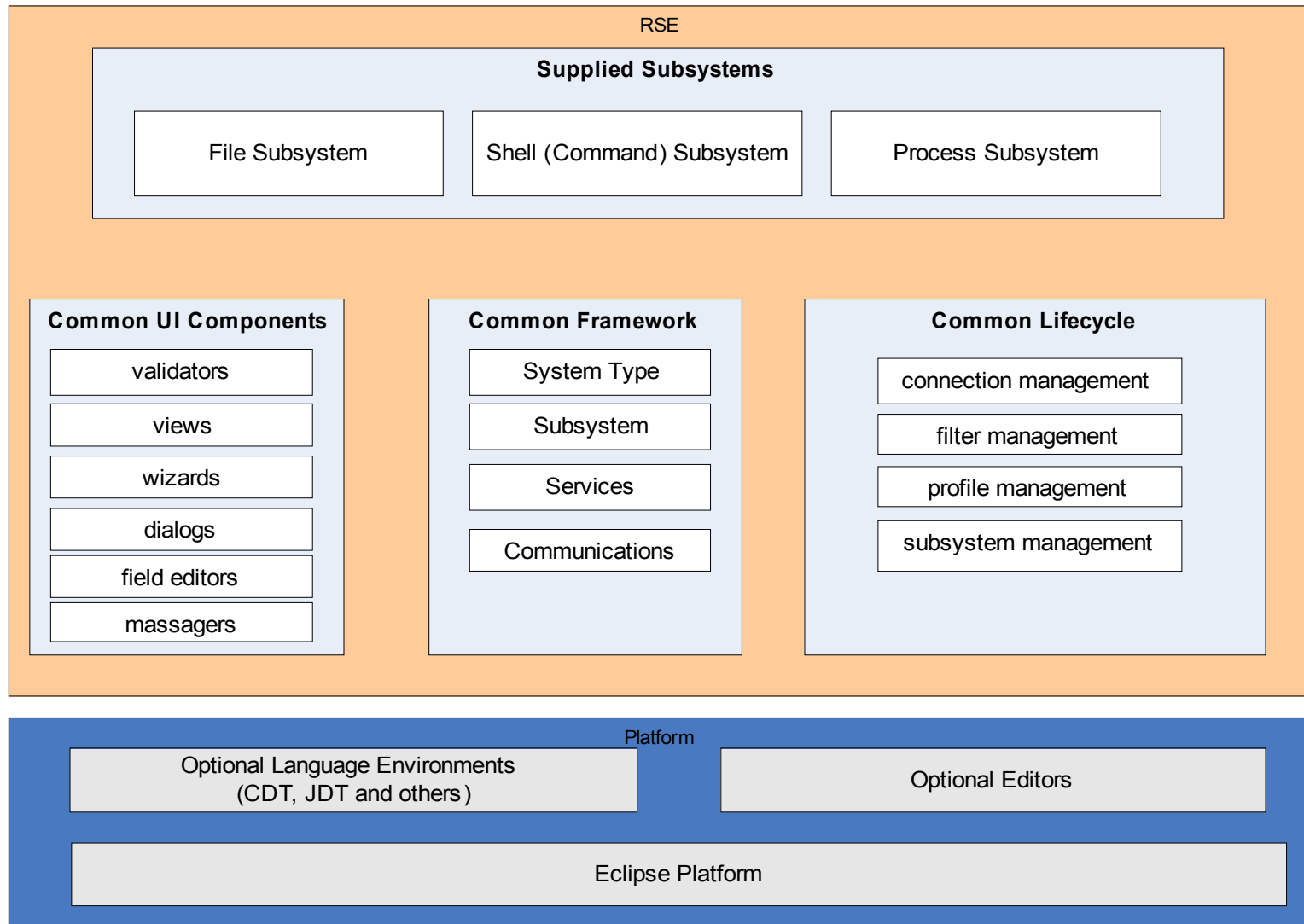
The screenshot shows the Eclipse Remote System Explorer interface. The main window displays a remote system named 'build.eclipse.org'. The left sidebar shows a tree view of the system's resources, including 'Sftp Files', 'My Home', 'Root', 'RSETest', 'dir2', 'linkReadmes.txt', 'readme5.txt', 'RSE-SDK-latest.zip', 'test.o', 'test2.c', 'Ssh Shells', 'szg-rhel4', 'Files', and 'Processes'. The 'Processes' subsystem is selected, and a filter 'My Processes' is applied. The main editor shows the source code of 'test2.c', which contains several printf statements. The bottom panel shows a 'Remote Shell' window with the command 'gcc -o test2 test2.c' and the output 'test2.c:8: error: parse error before "printf"'. The 'Remote System Details' window shows a table of processes.

Subsystems manage resources of a particular kind

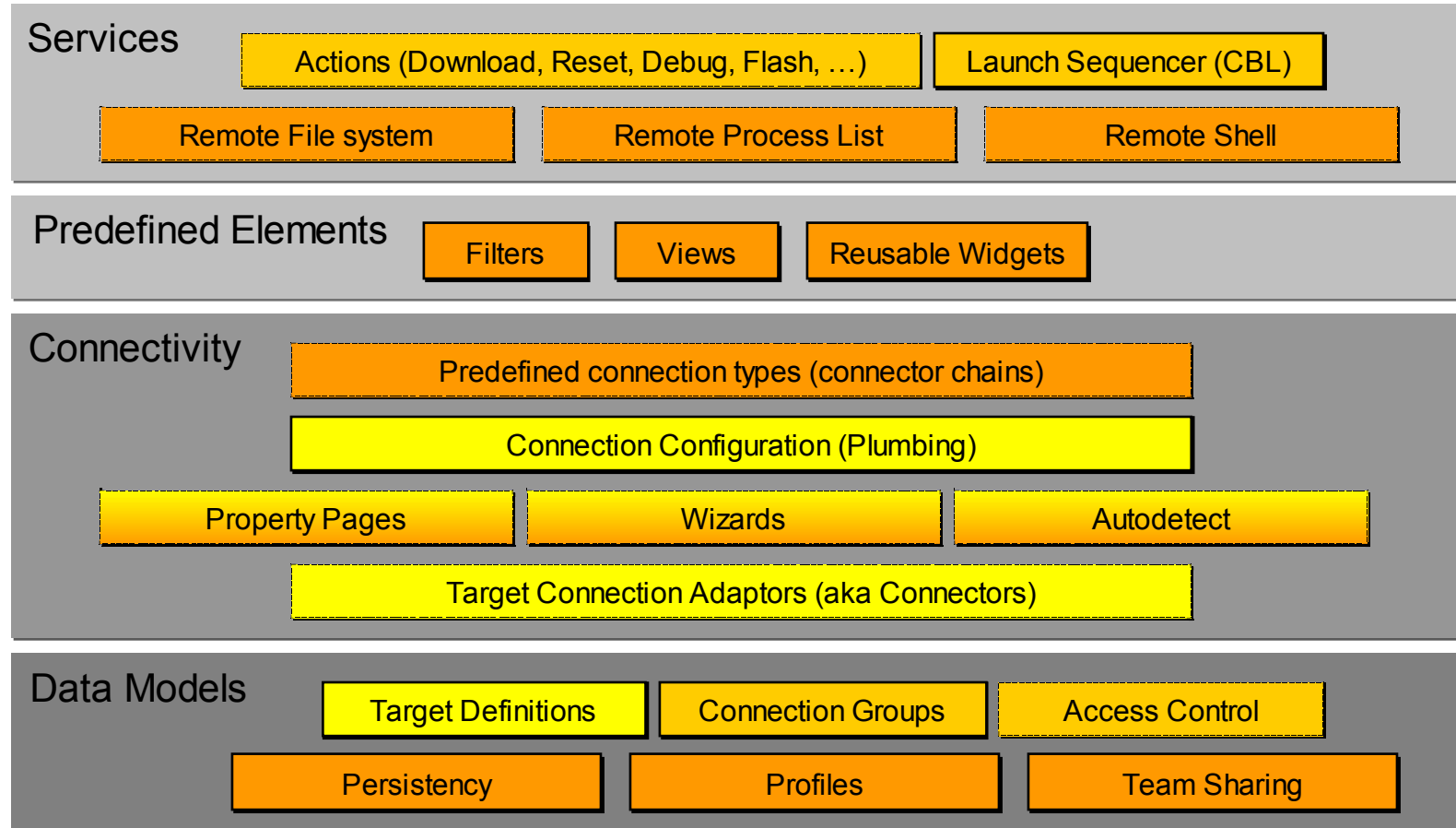
Filters select resources dynamically

Name	Process ID	VM
su	1089	4848 kilol
gconfd-2	5138	5584 kilol
xterm	5738	10188 kilol
tcsh	5741	5472 kilol
java	7556	218976 kilol
xterm	13436	10856 kilol
tcsh	13439	7280 kilol

Remote System Explorer (RSE) today

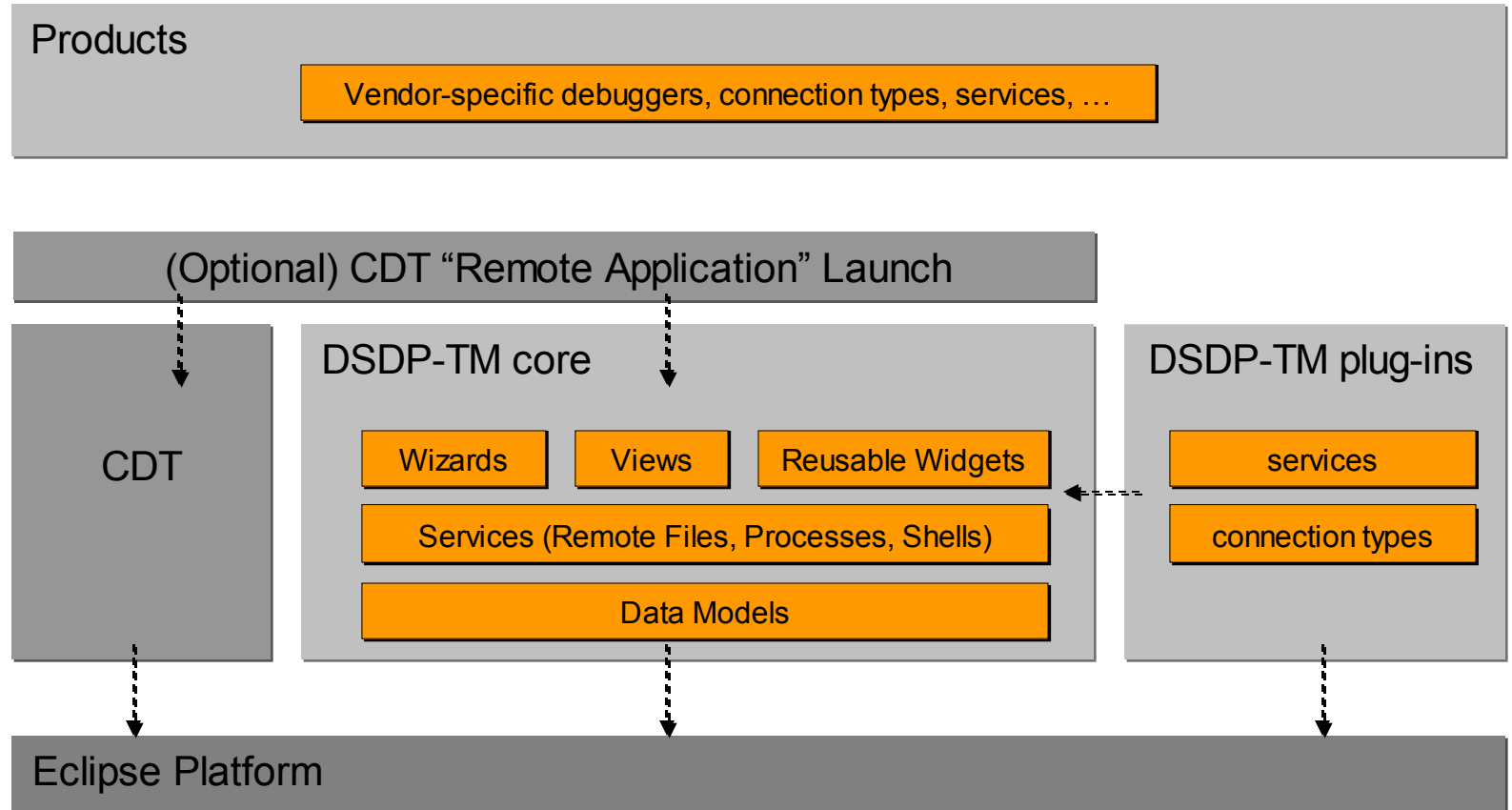


Target Management Architecture



Legend: ■ Existing components in RSE, ■ Design TBD, ■ Analysis TBD, □ Extension Point, ■ Fixed implementation

CDT Remote Launch: Plug-in dependencies





Summary: Plans and Timings

First Release (October 22, 2006 - on Eclipse 3.2)

- RSE – Release 1.0
 - Includes dstore, ssh, FTP connection types
 - UI tested on Windows, Linux, Solaris, Mac; targets also AIX, any FTP or SSH server
- CDT Remote Launch Integration – Release 1.0
- Zeroconf Discovery, EFS Integration – Preview Release

Milestones 2006-2007 (Proposed – plan not yet finished)

- More Standards based target connections (Telnet, ECF)
- Terminal Emulation Framework and View
- User-Defined Actions, Import/Export
- Component-Based Launching (CBL)
- Multi-core / Multi-target support through connection groups
- Connection Model for HW Debugging (complex connector setup)

Future

- Flexible Target Connector framework, Connector plumbing algorithm
- Adapters for Target access control (shared board labs)
- SSH tunneling connector



Getting Involved

- RSE is very flexible, with good basic abstractions
 - An option for your Project?
- RSE is a well established product
 - Still, a lot of community feedback will be needed
- Join the dsdp-tm-dev mailing list - <http://www.eclipse.org/dsdp/tm>
- Q & A